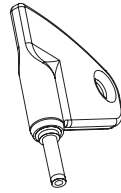
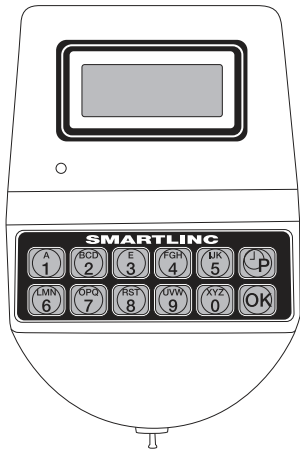


USER OPERATING INSTRUCTIONS



Optional eKey[®]
P/N 40169

AVAILABLE FEATURES

USER CODE

- Open Lock
- Change Code
- Set Immediate Time Lock, if enabled
- Time Delay Extension, if enabled
- Temporary Time Lock, if enabled

MULTIPLE LOCKS

- Up to Five

TIME DELAY

- Programmable on each lock
 - Delay Period: 1 - 99 minutes
 - Open Period: 1 - 19 minutes
- Two Time Delays Can Run At Once

DUAL CODE

- Two Codes required to open

eKEY[®] MODE

- Programmable on each lock; requires code and key for entry
- Available to Manager and Users only, if enabled

WRONG TRY PENALTY

- Four (4) consecutive invalid codes initiates five minute delay period

LOW BATTERY WARNING

- Repeated audio and visual signal (LCD readout and repeated beeping) during opening indicates battery low

AUDIO AND VISUAL SIGNAL

- Double signal (LCD readout and unit beeps) indicates entry is valid or accepted
- Triple signal indicates invalid or not accepted

TIME LOCK

If enabled, see Manager Instructions for operation.

CHANGING YOUR CODE

ALWAYS PERFORM THIS OPERATION WITH THE DOOR OPEN

If you have access to multiple locks, you must repeat this procedure on each lock you have access to.

1. Press any key to power up SMARTLING.
 - Display will show either "ENTER COMBO" or "SELECT LOCK" when two or more locks are installed.
2. Select lock if two or more locks are installed.
3. Enter "zero" six times
4. Enter existing six (6) digit code one time (and insert eKey[®], if set-up).
5. Enter NEW six (6) digit code two times (and insert eKey[®], if set-up, after 2nd entry).
 - If a valid code is entered the LCD will display "USER UPDATED"
6. If a mistake is made wait thirty (30) seconds and repeat steps 1- 4.
 - Old Code will remain valid if a mistake is made.
 - In case of a mistake, LCD will display "ERROR!"
7. Test lock operation several times before closing the door.

SELECT LOCK XX
ENTER COMBO X-X-X-X-X-X
OLD CODE X-X-X-X-X-X
NEW CODE X-X-X-X-X-X
CONFIRM NEW X-X-X-X-X-X
USER UPDATED
ERROR!

CHANGING YOUR BATTERY

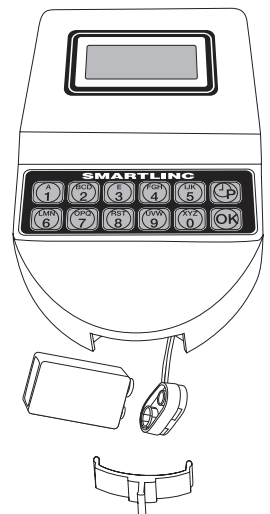
1. Remove black plastic battery compartment cover (located at the bottom of the keypad) by gently pulling downward on its handle.
2. Allow the battery and its attached leads to drop down and out of the battery compartment. If it does not drop, gently pull on the battery until it does.
3. Remove the connector by unsnapping it from the two terminals on the top of the battery.

Never Pull on the Battery Leads

4. Connect a new 9-Volt Alkaline battery to the battery clip.
5. Push the battery and the leads completely up into the battery compartment.
6. Install the battery cover by placing one side of the cover in position and then pressing the other side into position with your finger.

WARNING: The port for the eKEY[®] is a data port only. Connecting power to this port will damage the system.

NOTE: This system comes equipped with an Auxiliary Power Box (APB). If primary power is lost, the APB will maintain power to the audit clock for 90 hours. **THE UNIT WILL NOT FUNCTION UNTIL PRIMARY HAS BEEN RE-ESTABLISHED, i.e. batteries have been replaced or A/C power has been connected.**



Please note: If using the SMARTLING with the eKEY[®] feature, remove the key after each insertion to begin the next step. If the eKEY[®] is left in the key port, the SMARTLING will not respond to any key stroke.

OPENING THE LOCK (WITHOUT TIME DELAY)

1. Press any key to power up SMARTLINC.
 - Display will show either “ENTER COMBO” or “SELECT LOCK” when two or more locks are installed.
2. Select lock if two or more locks are installed.
3. Enter a valid 6 (six) digit code (and insert the eKey^{II}, if set-up)
 - If a valid code is entered the LCD will display “OPEN”
4. Open the Door within 3 seconds.
 - Before power-off, LCD will display current date and time.
 - Invalid code will prompt LCD to display “NOT VALID USER”
 - Display will power-off after 30 seconds of non-operation.

SELECT LOCK XX
ENTER COMBO X-X-X-X-X-X
OPEN!
NOT VALID USER!

OPENING THE LOCK (WITH TIME DELAY)

1. Press any key to power up SMARTLINC.
 - Display will show either “ENTER COMBO” or “SELECT LOCK” when two or more, locks are installed.
2. Select lock if two or more locks are installed.
3. Enter a valid 6 (six) digit code (and insert eKey^{II}, if set up)
 - If Time Delay has been set the LCD will show “TIME DELAY” and the counting time.
 - Counting is updated every second, if displayed.
 - Press “0” to abort Time Delay DELAY ABORTED!
 - After Time Delay has elapsed, the display will show “mm:ss” (open window counting time). Unit will beep every five (5) seconds during count down.
4. Enter a valid code (and insert eKey^{II}, if set up) to open.
 - If a valid code is entered the LCD will display “OPEN”
5. Open the door within 3 seconds.
 - Invalid code will prompt LCD to display “NOT VALID USER”
 - Display will power-off after 30 seconds of non-operation.
 - If using the Time Delay Override (USER #9), enter USER code for USER #9 and insert eKey^{II}.

SELECT LOCK XX
ENTER COMBO X-X-X-X-X-X
TIME DELAY 14:31
03:51 X-X-X-X-X-X
OPEN!

NOTE: To open a 2nd lock while one is in Time Delay, press the “P” key and select that lock number, then follow opening procedure above. During Time Delay only the “P” and the zero key are active.

OPENING THE LOCK (WITH DUAL CODE - NO TIME DELAY)

1. Press any key to power up SMARTLINC.
 - Display will show either “ENTER COMBO” or “SELECT LOCK” when two or more locks are installed.
2. Select lock if two or more locks are installed.
3. Enter a valid 6 (six) digit code (and insert eKey^{II}, if set up)
4. Enter a 2nd valid 6 (six) digit code (and insert eKey^{II}, if set up)
 - If a valid code is entered the LCD will display “OPEN”
5. Open the door within 3 seconds.
 - Before power-off, LCD will display current date and time.
 - Invalid code will prompt LCD to display “NOT VALID USER”.
 - Display will power-off after 30 seconds of non-operation.

SELECT LOCK XX
ENTER COMBO X-X-X-X-X-X
2nd CODE X-X-X-X-X-X
OPEN!
NOT VALID USER!

OPENING THE LOCK (WITH DUAL CODE AND TIME DELAY)

1. Press any key to power up SMARTLINC.
 - Display will show either “ENTER COMBO” or “SELECT LOCK” when two or more locks are installed.
2. Select lock if two or more locks are installed.
3. Enter a valid 6 (six) digit code (and insert eKey^{II}, if set up)
 - If Time Delay has been set the LCD will show “TIME DELAY” and the counting time.
 - Counting is updated every second, if displayed.
 - Press “0” to abort Time Delay DELAY ABORTED!
 - After Time Delay has elapsed, the display will show “mm:ss” (open window counting time).
4. Enter a valid 6 (six) digit code (and insert eKey^{II}, if set up)
5. Enter a 2nd valid 6 (six) digit code (and insert eKey^{II}, if set up)
 - If a valid code is entered the LCD will display “OPEN”
 - If the Override User (#9) is installed with Dual Code, User #9 must enter their code (and insert eKey^{II}, if set up) first.
6. Open the door within 3 seconds.
 - Invalid code will prompt LCD to display “NOT VALID USER”
 - Display will power-off after 30 seconds of non-operation.

SELECT LOCK XX
ENTER COMBO X-X-X-X-X-X
TIME DELAY 14:31
03:51 X-X-X-X-X-X
2nd CODE X-X-X-X-X-X
OPEN!

NOTE: To open a 2nd lock while one is in Time Delay, press the “P” key and select that lock number then follow opening procedure above.